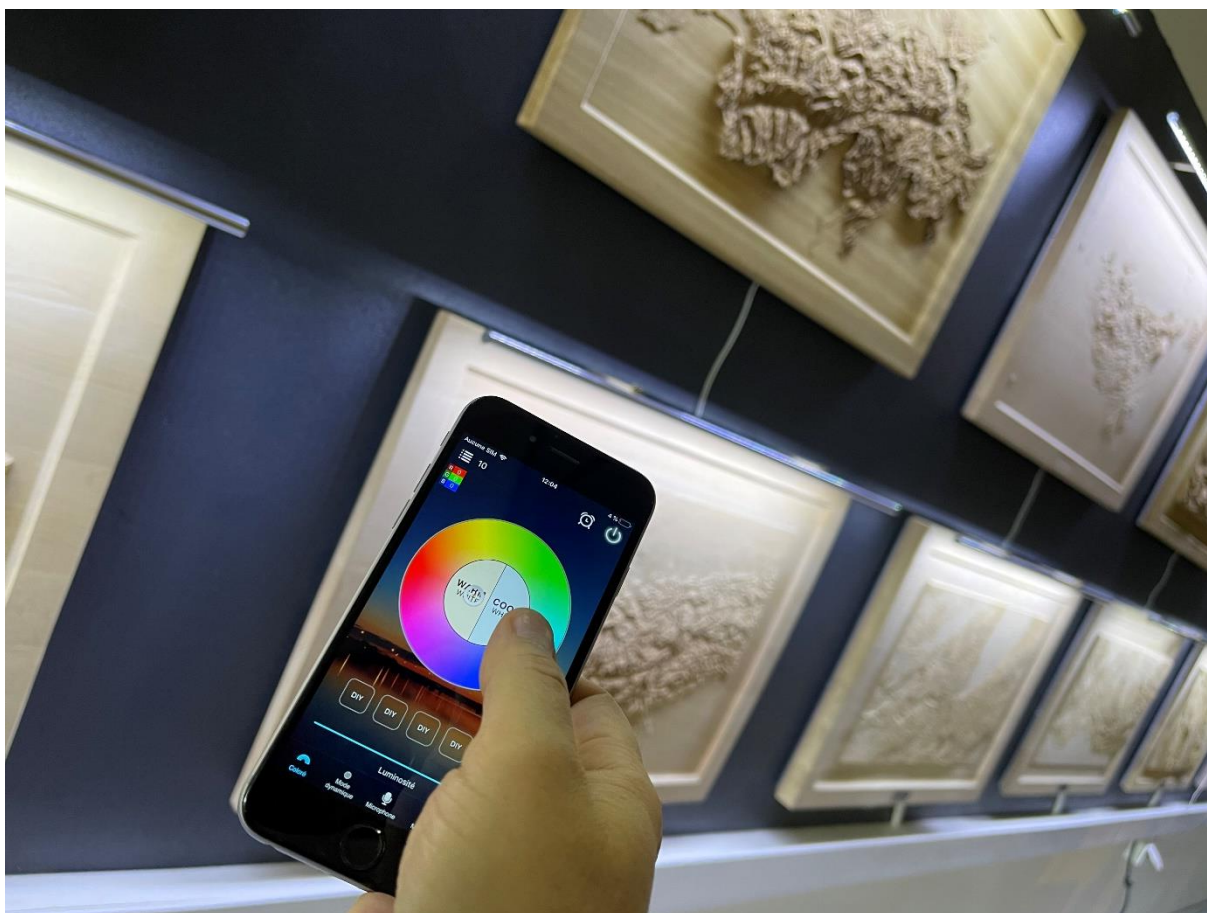


LED CONTROLER FOR GRAVITY.SWISS DEVICE





Software User Manual for IOS

APP installation instructions:

Method 1: Search Magic Home Pro in “APP Store”. Or click the bellow link and download the app.



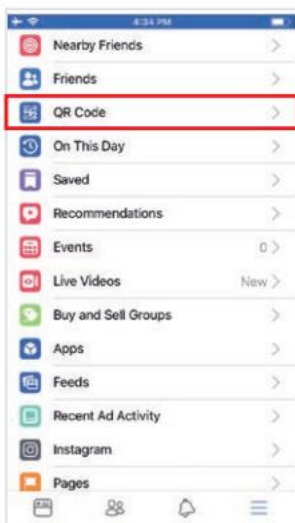
Magic Home pro



Method 2: Download the APP by scanning the below QR code for free.



Installation details as below.



Step 1



Step 2



Step 3

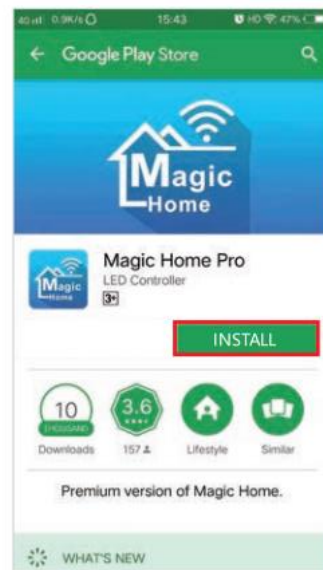
Software User Manual for Android.

APP installation instructions:

Method 1: Search Magic Home Pro in “Google Play Store” or from browsers. Installation details as follow.



Step 1

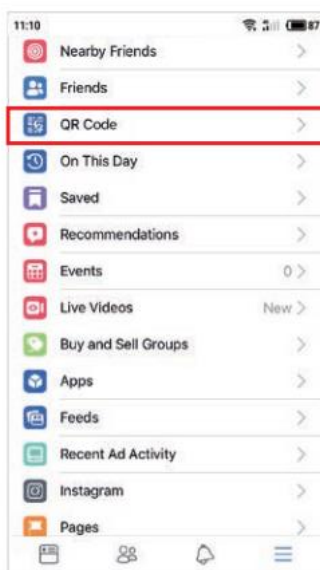


Step 2

Method 2: Download the APP by scanning the below QR code for free.



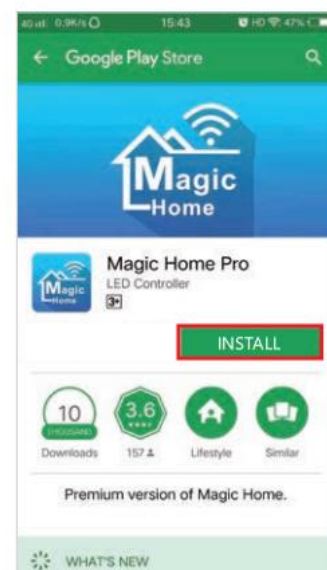
Installation details as below.



Step 1



Step 2



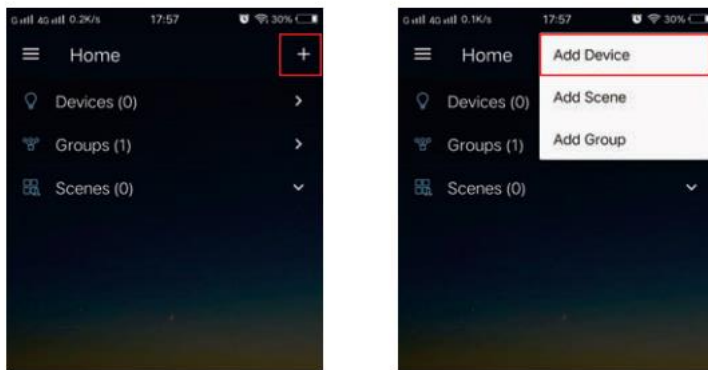
Step 3

Instructions

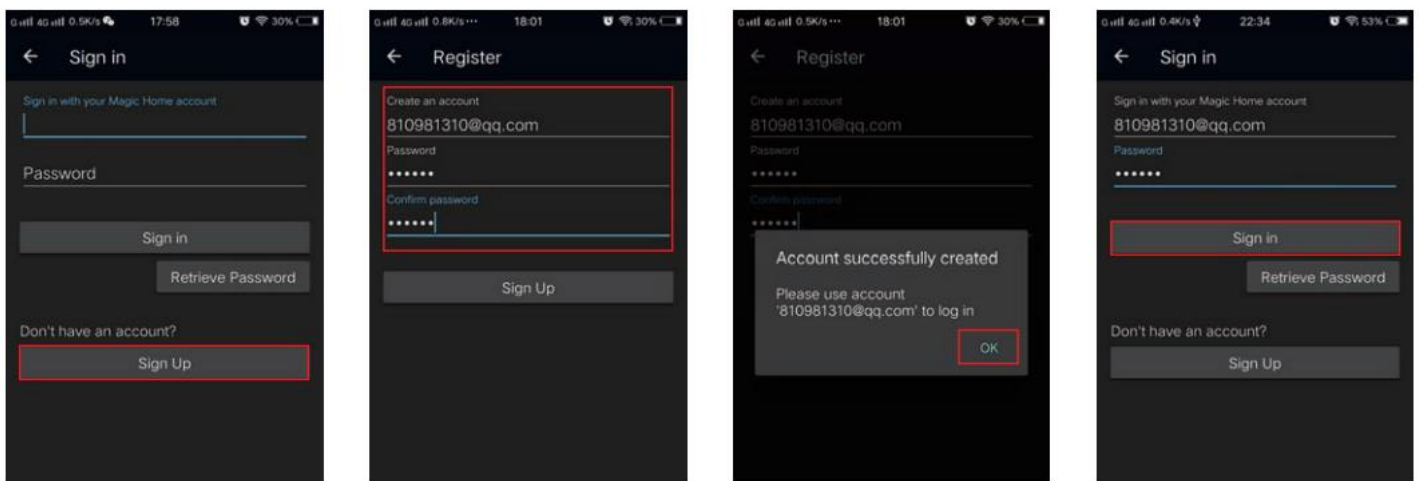
There are three different ways to connect the controller after it has been connected to the power supply.

a) Wi-Fi mode: This mode needs register and login after complete 1 to 1 Mode.(Please refer to connection mode c) Make sure the controller has been powered and never been set, please operate as below steps.

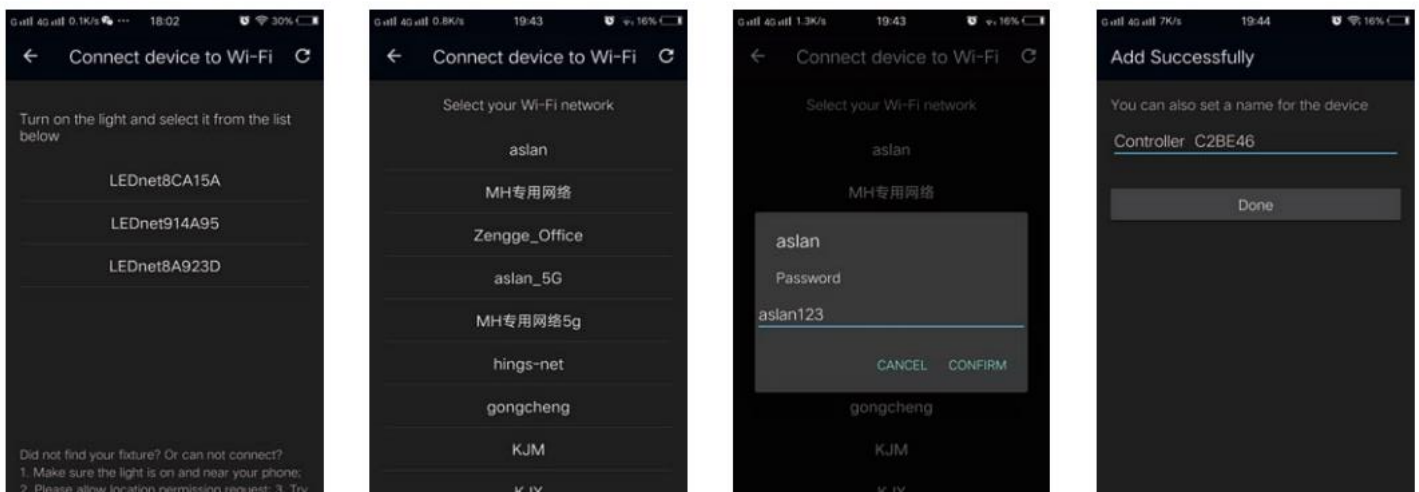
1.Click "+" in the upper right corner and click "add device"



2.Register and login account

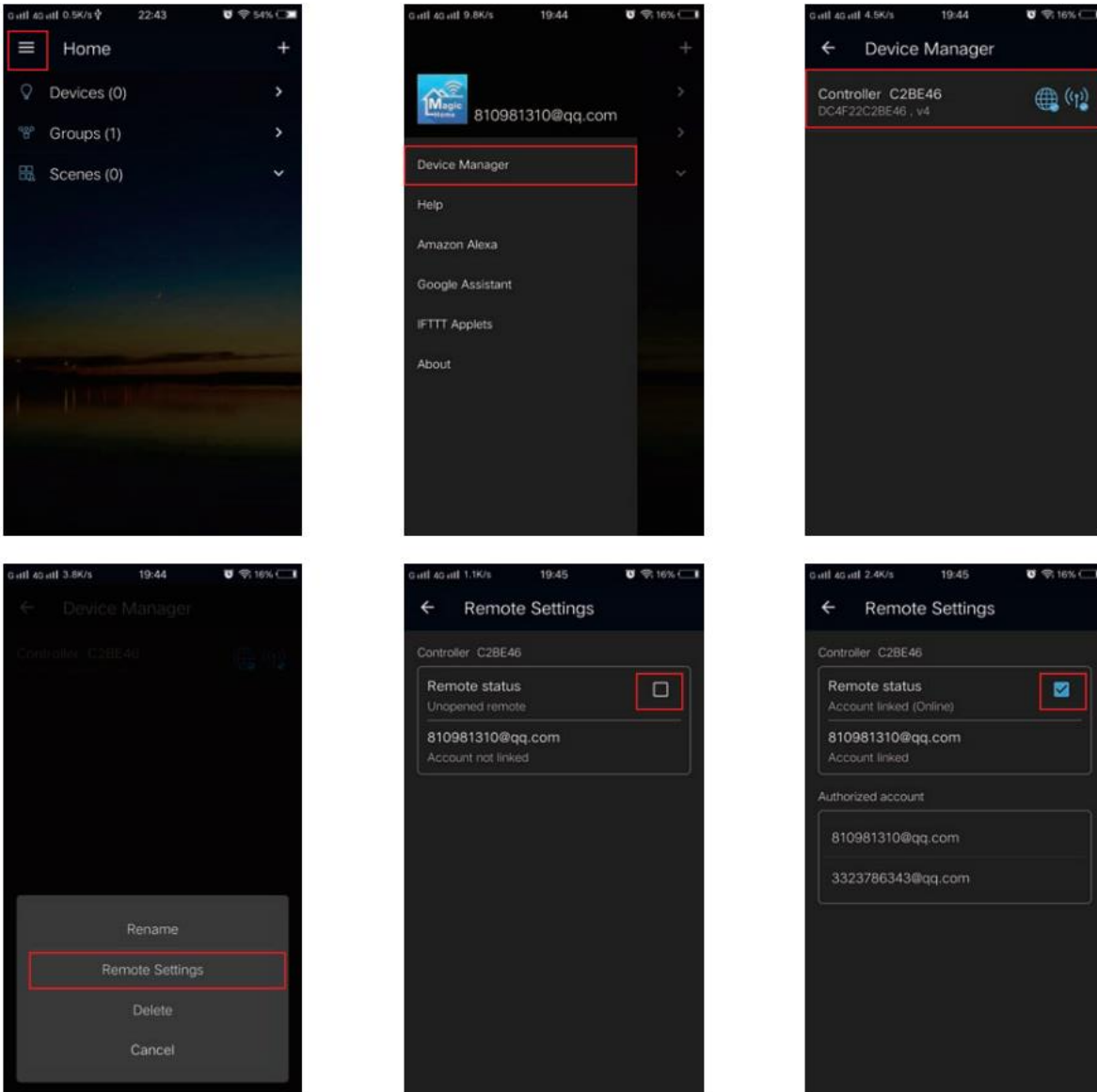


3.Connect the device to the router



b) Remote control via Internet:

Here you can locate the Wi-Fi controller via the internet from anywhere in the world In Wi-Fi mode (connect mode(a)). Keep the Wi-Fi router online, no matter where you are ,you still can control your lights with APP as long as there' s Wi-Fi/3G/4G internet for your smartphone.



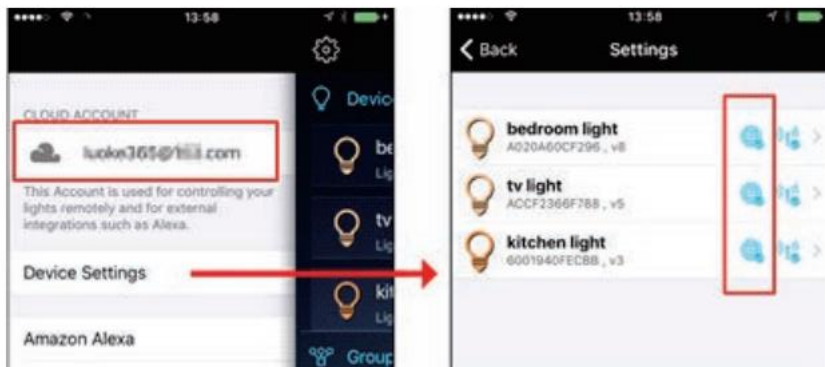
c) 1 to 1 Mode: Open mobile Wi-Fi network signal, find “LEDnet*****” signal and connect, then open Magic Home Pro APP.



If the network connect successfully you can enter the APP for operation.

Step 1: Create your Magic Home cloud account

In order to control your smart light with the Google Assistant or control them remotely you need to create a Magic Home cloud account and sign in.



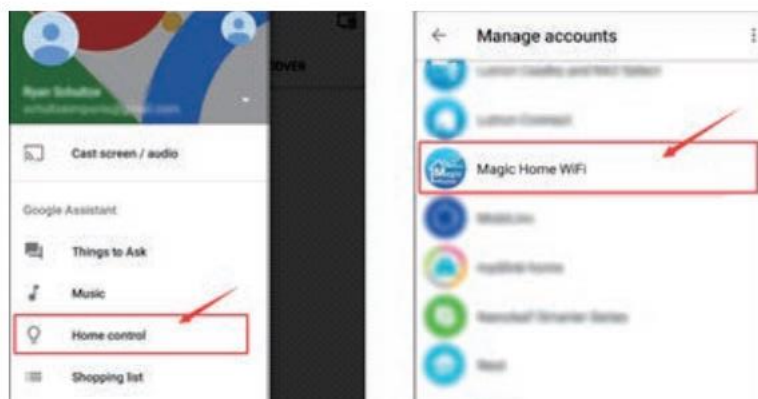
Step 2: Add your light and modify the name

Make sure there is at least one smart light in device list, and enable your lights for remote control. On "Home" page, long press the light to rename.



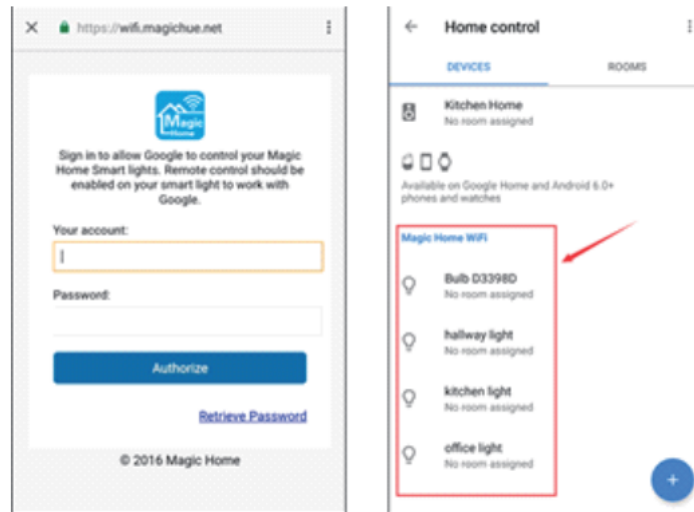
Step 3: Add Home Control Action

Click "Home control" on "Home" APP. Select "Magic Home WiFi" The account and password must be same as the one you created in Magic Home Pro APP.



Step 4: Login with your app account

Enter your app account and password to finish the account linking. (Use the Magic Home cloud account you used on step 1). Your lights will be listed on “Home Control” interface.



Step 5: Control your light

Here, you finish all setups. You can now control your lights by issuing voice commands.

Supported Commands:

Say "Ok Google" or "Hey Google", then..

Turn on <light name>

Dim <light name>

Brighten <light name>

Set <light name> to [50%]

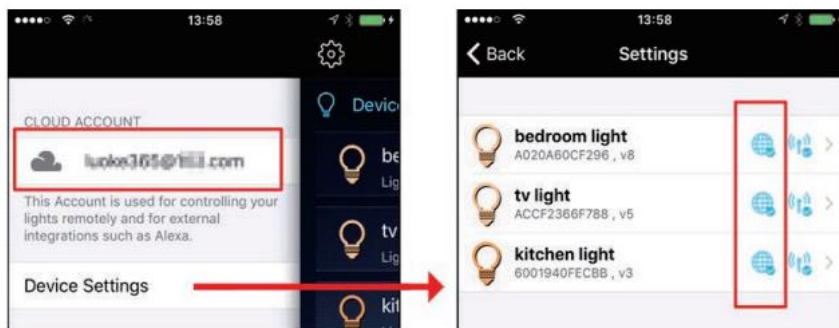
Dim/Brighten <light name> by [50%]

Turn on/off all the lights

Is <light name> on

Step 1: Create your Magic Home cloud account

In order to control your smart light with the Amazon Echo or control them remotely, you need to create a Magic Home cloud account and sign in.



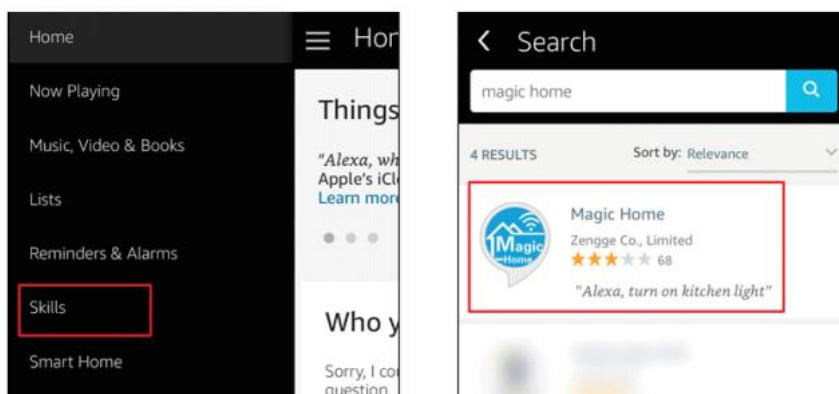
Step 2: Add your light and modify the name

Make sure there is at least one smart light in device list, and enable your lights for remote control. On "Home" page, long press light to rename.



Step 3: Enable Alexa Skill

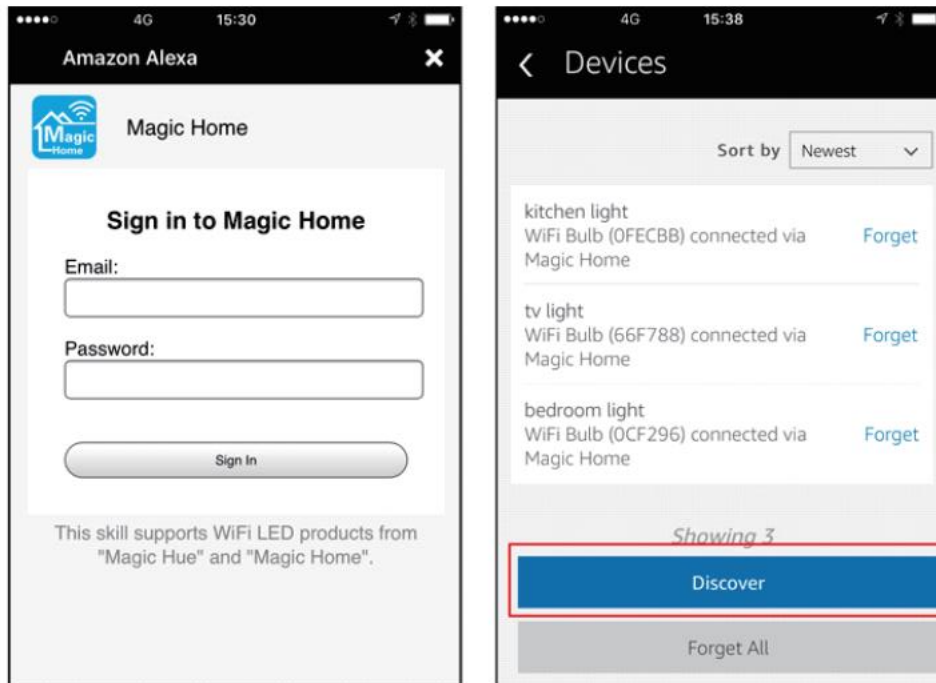
The next step is to download the Amazon Alexa app, open the Amazon Alexa app and under the skills section, search for the "Magic Home" skill. The account and password must be same as you created in Magic Home Pro APP.



Step 4: Login and Discover Devices

Use your Magic Home cloud account you created in step 1 to sign in to "Magic Home" Skill. The next step is to discover your smart lights from Alexa app. You can say "Alexa, discover devices".

Once Alexa has completed discovering your smart lights, they will be shown in the Smart Home section in Alexa app.



Step 5: Control your light

Here, you finish all setups. You can now control your lights by issuing voice commands.

Supported Commands:

These are some of the currently supported Alexa voice commands for the smart light.

Alexa, set [light name] to [0-100]%

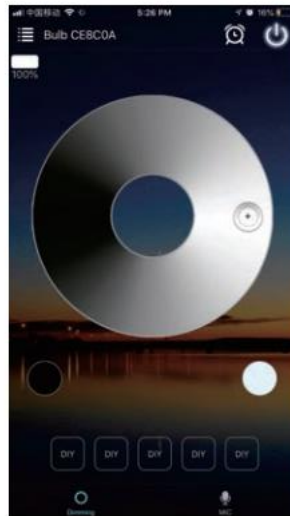
Alexa, turn [light name] on/off

Alexa, dim/brighten [light name]

Alexa, increase/decrease [light name]

PRODUCT FUNCTION INTRODUCTION

Change brightness, ON/OFF by APP

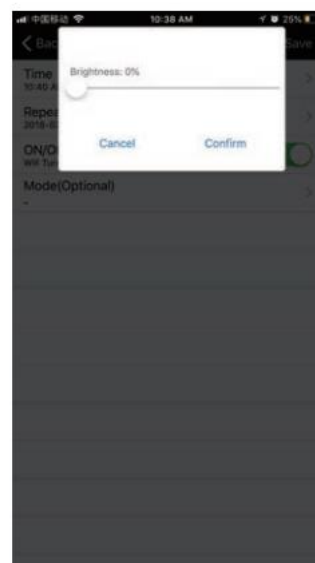
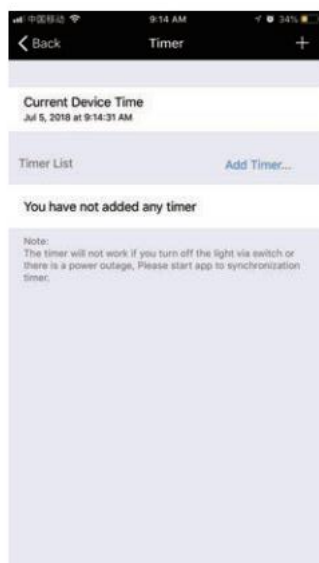


Group Feature

Zengge controllers (Magic Home Pro) allows you to create different groups to control more than one controllers, for example, if you have 2 controller units, you can use one system in your living room & the other out on your patio. The grouping function allows you to either control these systems individually or to group them together as one unit.

Light timer

You can have your lights automatically turn on or off in a specified time by setting up the timer.

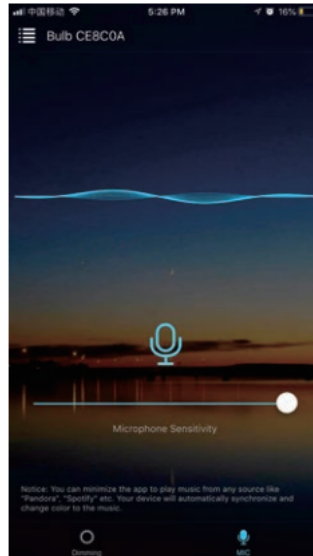


Microphone function

Click/ go to “Disco” interface of the APP.

In this function the connected LED light lights up depending on the volume/noise from the outside like a microphone. This also works when playing music or there is a noise from outside, the light will begin “dancing” base on different rhythm.

The microphone sensitivity can be adjusted by the slider.



Remote control

1. We have maintained long-term cooperation with the US Ali Cloud Terminal in USA server to provide our customers with better remote control services.
2. When and only when you register and login your account in Magic Home Pro APP, No matter where you are, you still can control your home light with APP as long as there's WiFi/2G/3G/4G internet for your smart phone.
3. Note: After the controller is bound to home WIFI, it will not display on your WIFI list anymore.

If you have any questions, you can contact us at:
info@gravity.swiss